

Figure 1 shows the pin connections and internal block diagram of the 64CON. The top part is a pinout for pins C1 through C32. The bottom part is an internal block diagram showing IC32 (34084) and IC600 (082) connected to +12V and -12V supplies via capacitors C82 and C83.

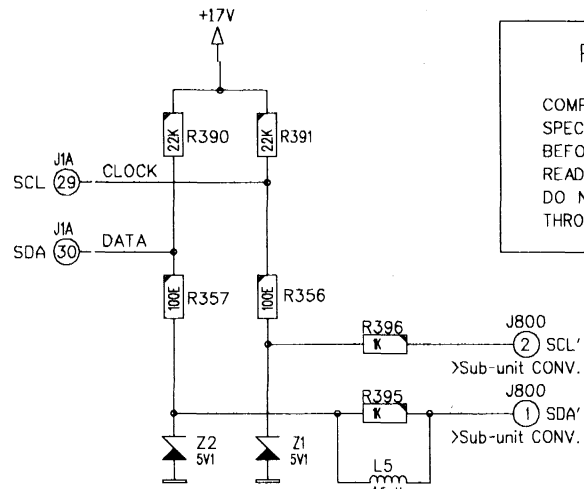
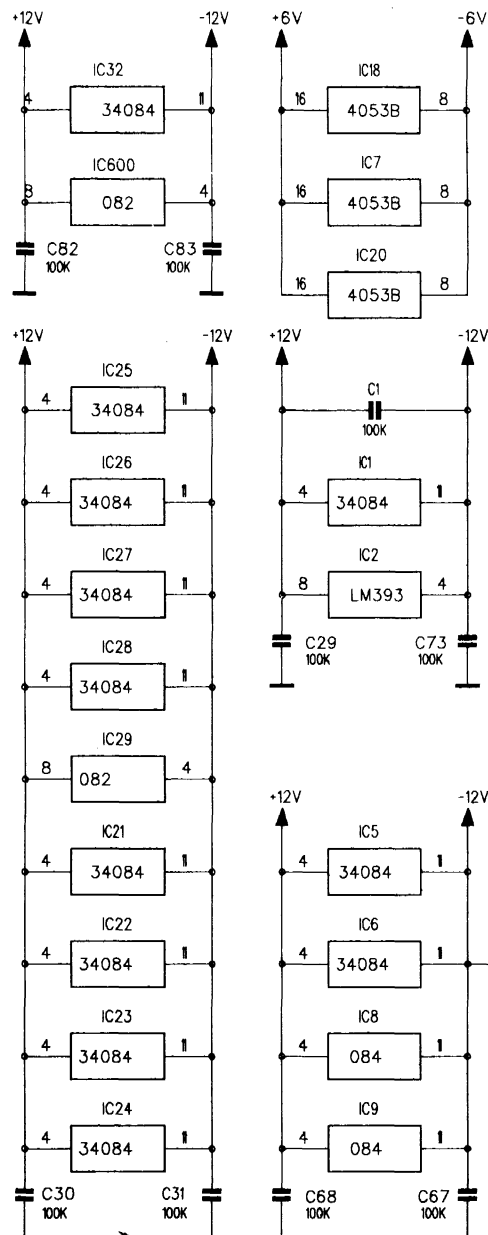
Pin	Signal / Voltage
C1	THHD
C2	
C3	
C4	LP
C5	
C6	
C7	-17V
C8	-17V
C9	VDL B
C10	+17V
C11	+17V
C12	
C13	GVL
C14	GHL
C15	GHH
C16	GVH
C17	
C18	BVL
C19	BHL
C20	BHH
C21	BVH
C22	
C23	RVL
C24	RHL
C25	RHH
C26	RVH
C27	
C28	VDL B
C29	SCL
C30	SDA
C31	
C32	

Internal Block Diagram:

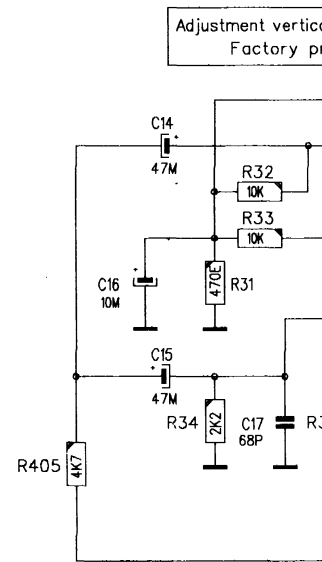
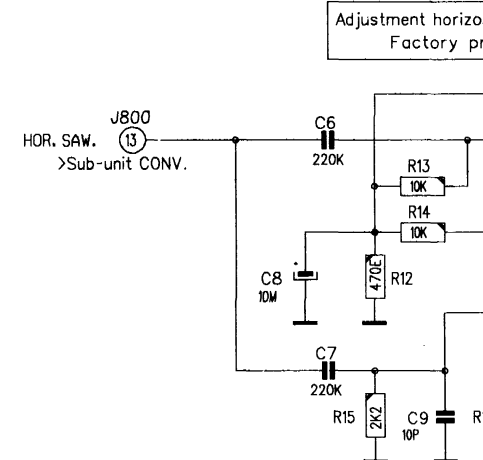
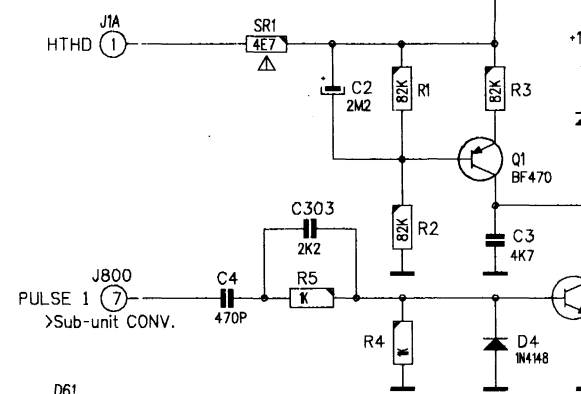
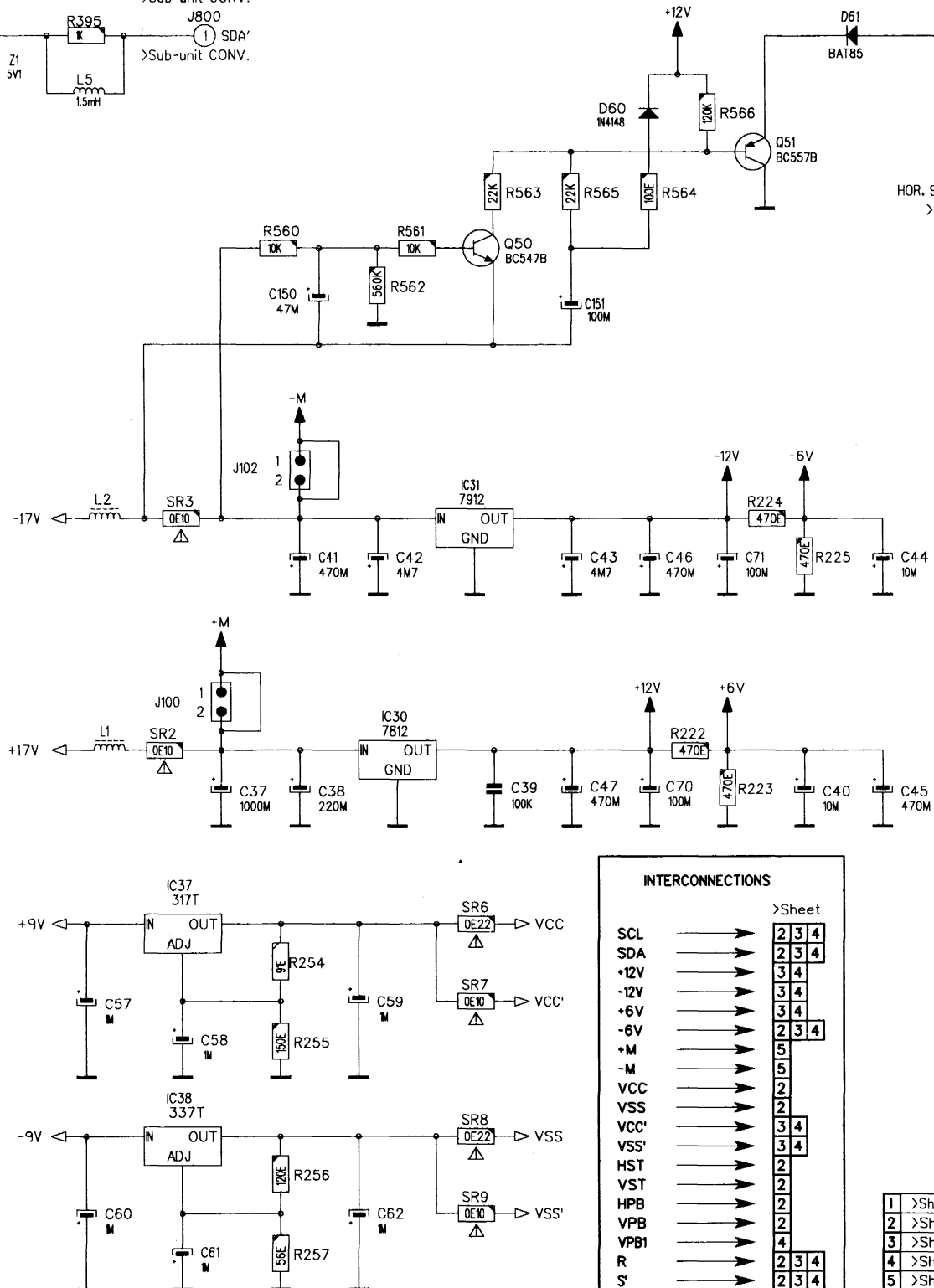
- IC32 (34084) is connected to +12V (pin 4) and -12V (pin 11).
- IC600 (082) is connected to +12V (pin 8) and -12V (pin 4).
- Capacitors C82 and C83 (100K) are connected to the +12V and -12V supplies respectively.

Pin	Signal
1	TXDC
2	RXDC
3	DTRC
4	CTSC
5	+5VSB_REC
6	IRR
7	-9VSB
8	+9VSB
9	-9V
10	-9V
11	X
12	X
13	X
14	X
15	X
16	X
17	X
18	X
19	X
20	X
21	X
22	X
23	X
24	X
25	X
26	X
27	+9V
28	+9V
29	-9V
30	-9V
31	X
32	X

64CON



COMPONENTS MARKED WITH ✱ OR ⚠ HAVE SPECIAL CHARACTERISTICS IMPORTANT TO SAFETY. BEFORE REPLACING ANY OF THESE COMPONENTS, READ CAREFULLY THE SERVICE SAFETY PRECAUTIONS. DO NOT DEGRADE THE SAFETY OF THIS SET THROUGH IMPROPER SERVICING.



>Sheet

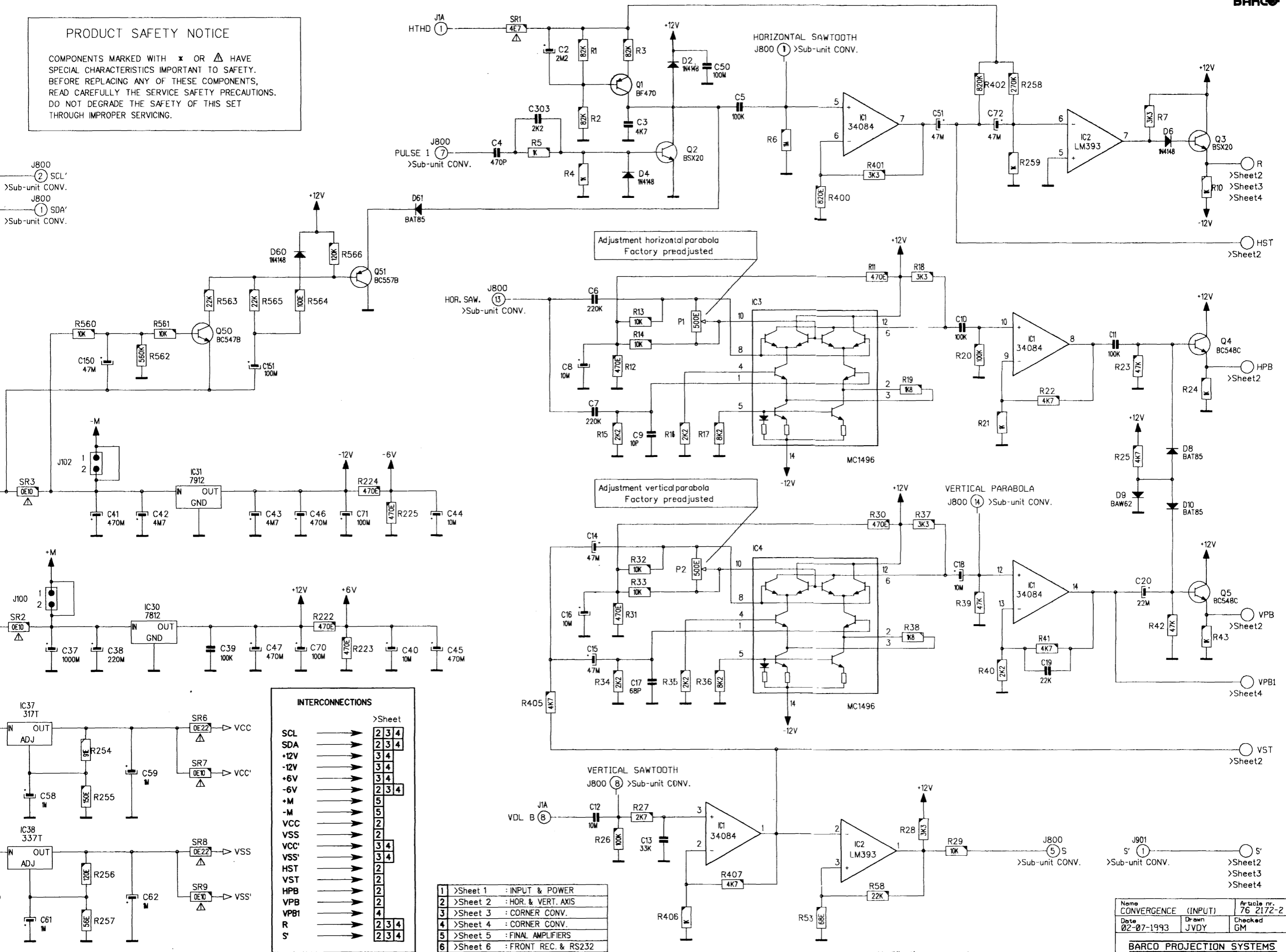
SCL	→	2	3	4
SDA	→	2	3	4
+12V	→	3	4	
-12V	→	3	4	
+6V	→	3	4	
-6V	→	2	3	4
+M	→	5		
-M	→	5		
VCC	→	2		
VSS	→	2		
VCC'	→	3	4	
VSS'	→	3	4	
HST	→	2		
VST	→	2		
HPB	→	2		
VPB	→	2		
VPB1	→	4		
R	→	2	3	4
S	→	2	3	4

1	>Sheet 1	: INPUT & POWER
2	>Sheet 2	: HOR. & VERT. AXIS
3	>Sheet 3	: CORNER CONV.
4	>Sheet 4	: CORNER CONV.
5	>Sheet 5	: FINAL AMPLIFIERS
6	>Sheet 6	: FRONT REC. & RS232

PRODUCT SAFETY NOTICE

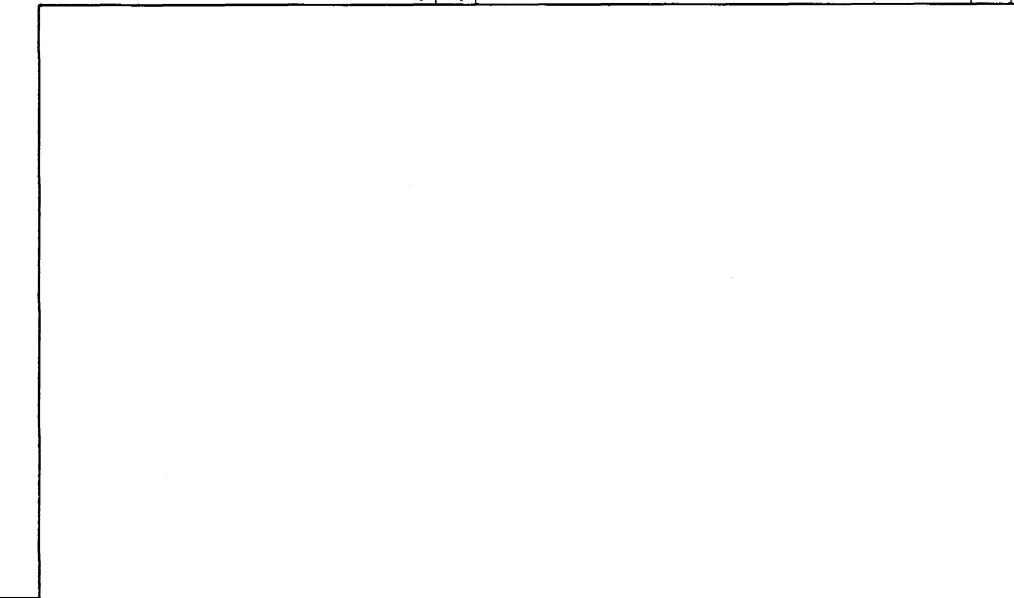
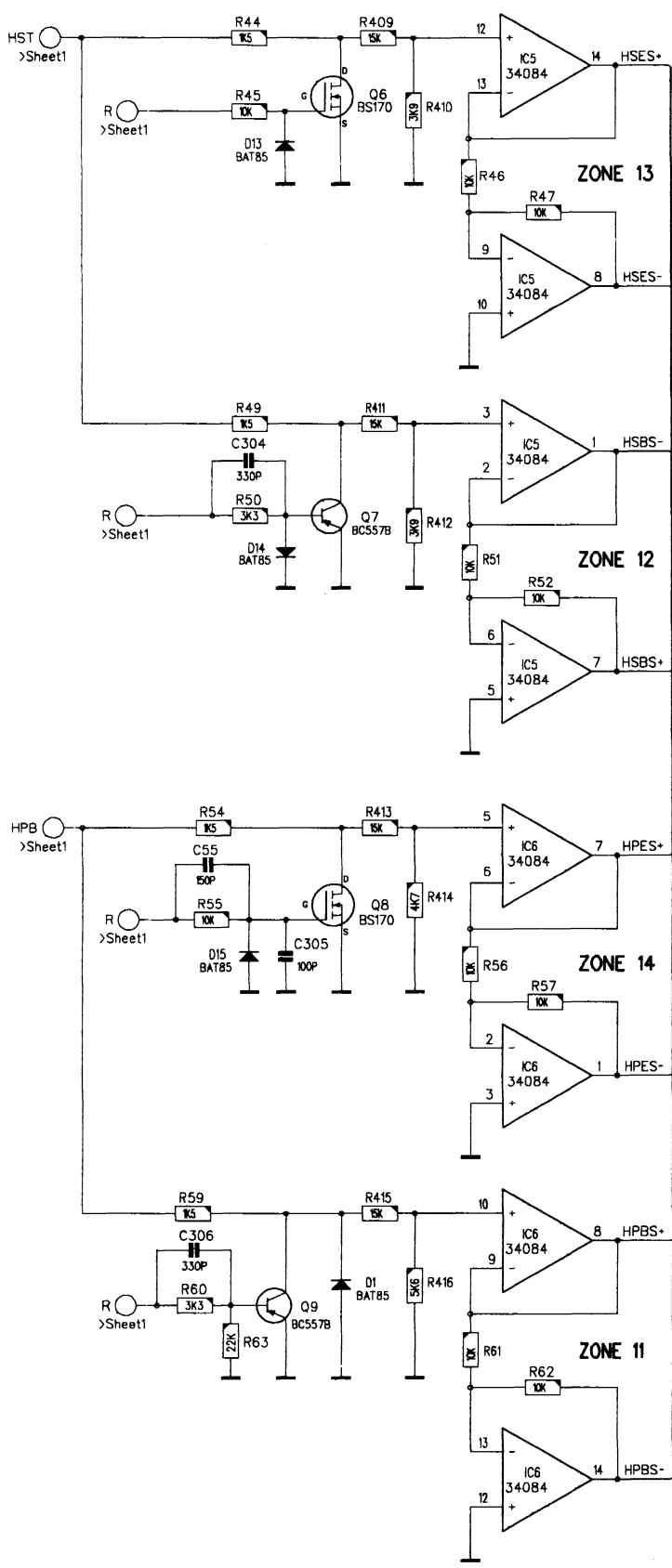
COMPONENTS MARKED WITH * OR Δ HAVE SPECIAL CHARACTERISTICS IMPORTANT TO SAFETY. BEFORE REPLACING ANY OF THESE COMPONENTS, READ CAREFULLY THE SERVICE SAFETY PRECAUTIONS. DO NOT DEGRADE THE SAFETY OF THIS SET THROUGH IMPROPER SERVICING.

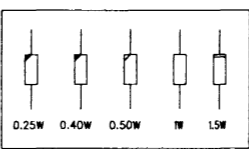
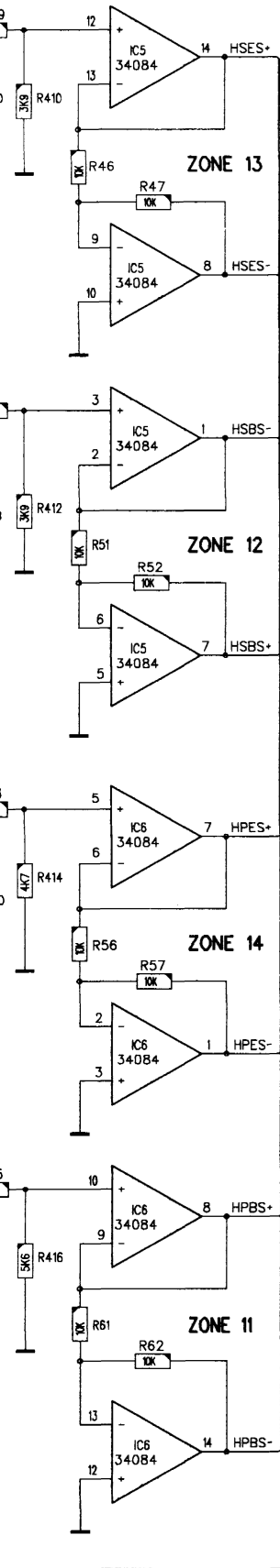
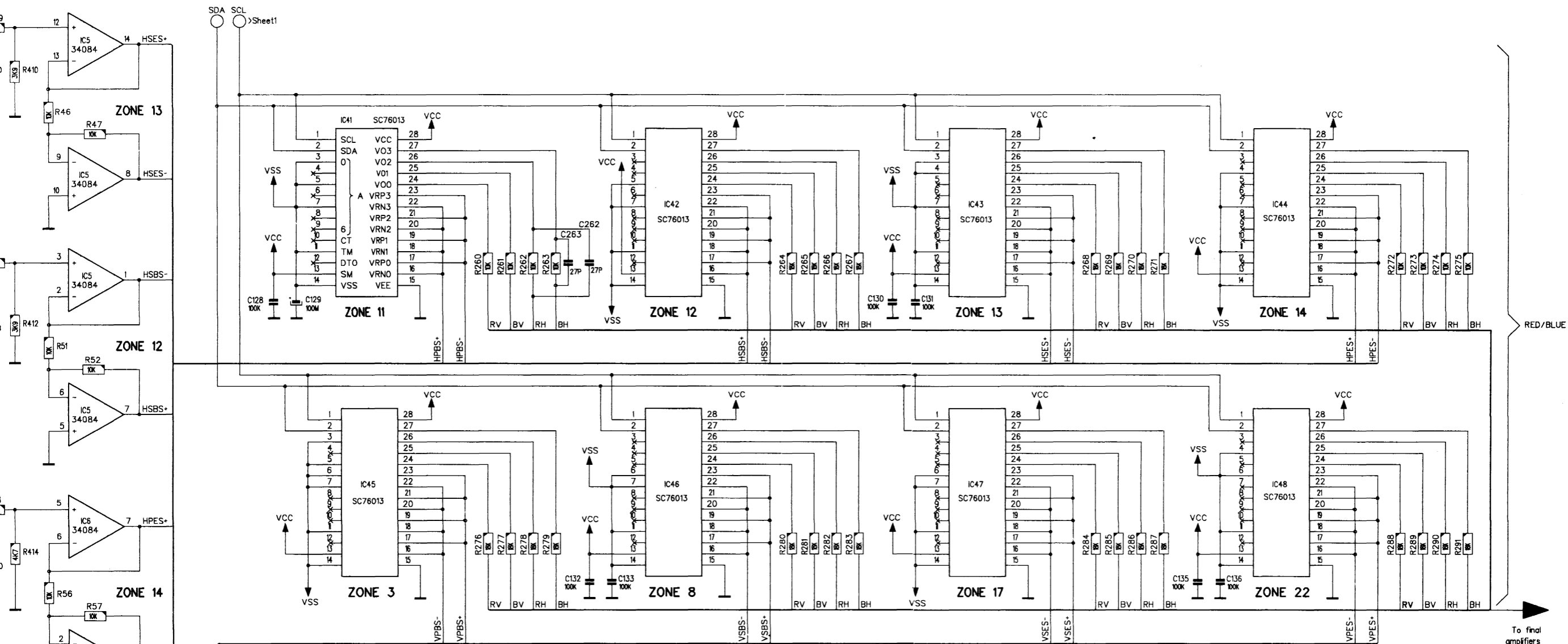
J800
② SCL'
>Sub-unit CONV.
J800
① SDA'
>Sub-unit CONV.



Modifications reserved

Name CONVERGENCE (INPUT)		Article nr. 76 2172-2
Date 02-07-1993	Drawn JVDY	Checked GM
BARCO PROJECTION SYSTEMS		





PRODUCT SAFETY NOTICE

COMPONENTS MARKED WITH * OR Δ HAVE SPECIAL CHARACTERISTICS IMPORTANT TO SAFETY. BEFORE REPLACING ANY OF THESE COMPONENTS, READ CAREFULLY THE SERVICE SAFETY PRECAUTIONS. DO NOT DEGRADE THE SAFETY OF THIS SET THROUGH IMPROPER SERVICING.

INTERCONNECTIONS

Signal	Pin	Component
SDA	1	R390
SCL	1	R391
-6V	1	node R224/R225
VCC	1	SR6
VSS	1	SR8
HST	1	node C51/C72
VST	1	pin1/IC1
HPB	1	emitter Q4
VPB	1	emitter Q5
R	1	emitter Q3
HSES+	3	pin4/IC10
HSBS+	4	pin4/IC16
HSBS-	4	pin4/IC11
HPES+	3	pin4/IC14
HPES-	4	pin4/IC12
HPBS+	3	pin4/IC15
HPBS-	4	pin4/IC13
RH	5	pin13/IC32
BH	5	pin9/IC32
RV	5	pin2/IC32
BV	5	pin6/IC32

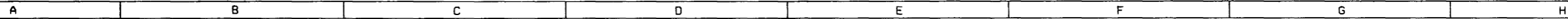
CORRECTION ZONE

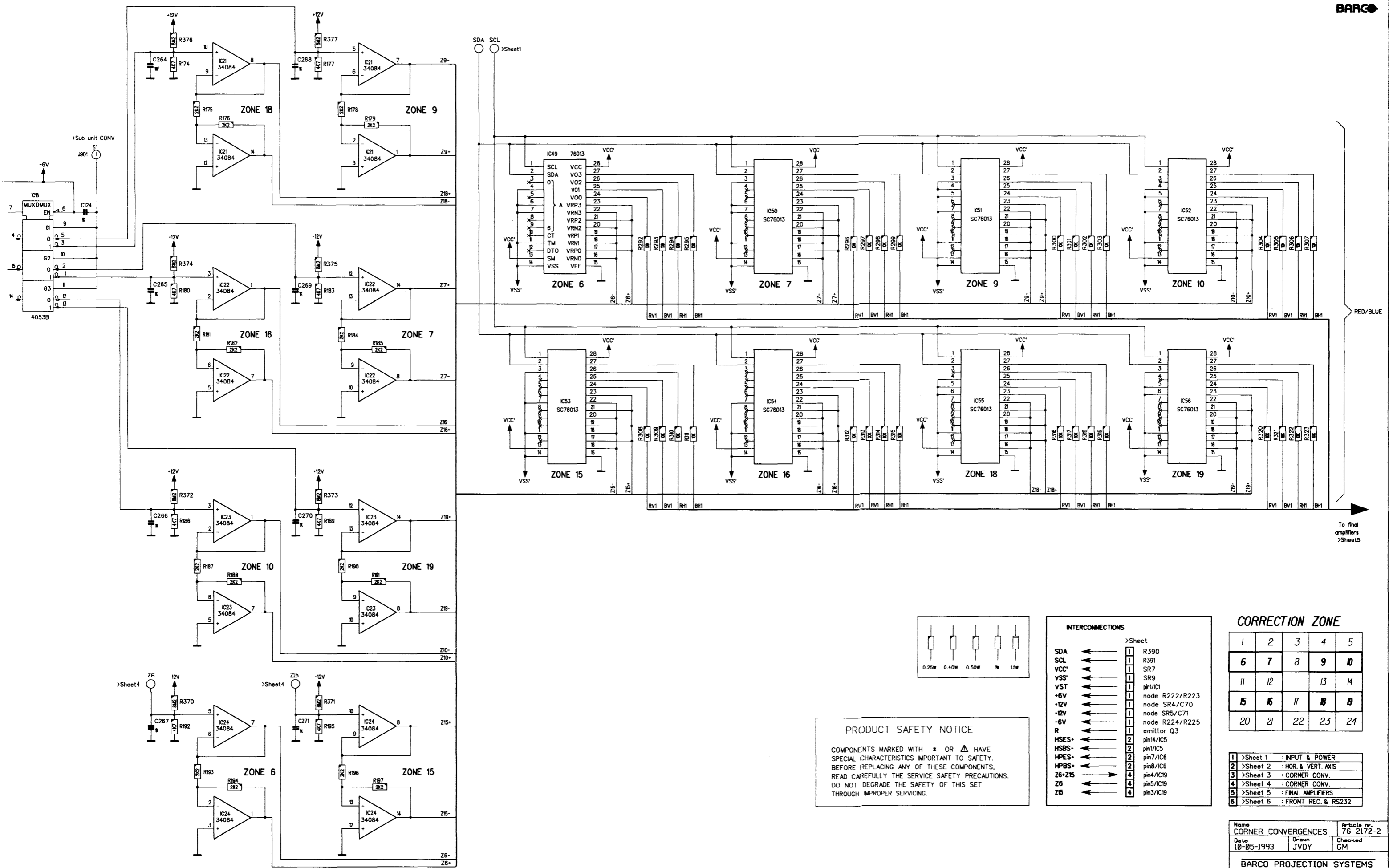
1	2	3	4	5
6	7	8	9	10
11	12		13	14
15	16	17	18	19
20	21	22	23	24

1	>Sheet 1	: INPUT & POWER
2	>Sheet 2	: HOR. & VERT. AXIS
3	>Sheet 3	: CORNER CONV.
4	>Sheet 4	: CORNER CONV.
5	>Sheet 5	: FINAL AMPLIFIERS
6	>Sheet 6	: FRONT REC. & RS232

Name	HOR. & VERT. AXIS CONV.		Article nr.	76 2172-2
Date	07-05-1993	Drawn	JVDY	Checked
			GM	

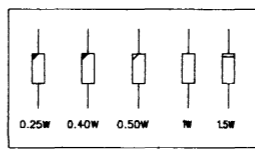
BARCO PROJECTION SYSTEMS





PRODUCT SAFETY NOTICE

COMPONENTS MARKED WITH * OR Δ HAVE SPECIAL CHARACTERISTICS IMPORTANT TO SAFETY. BEFORE REPLACING ANY OF THESE COMPONENTS, READ CAREFULLY THE SERVICE SAFETY PRECAUTIONS. DO NOT DEGRADE THE SAFETY OF THIS SET THROUGH IMPROPER SERVICING.



INTERCONNECTIONS

Symbol	Pin	Component
SDA	1	R390
SCL	1	R391
VCC'	1	SR7
VSS'	1	SR9
VST	1	pin1/IC1
+6V	1	node R222/R223
+12V	1	node SR4/C70
-12V	1	node SR5/C71
-6V	1	node R224/R225
R	1	emitter Q3
HSES	2	pin14/IC5
HSBS	2	pin1/IC5
HPES	2	pin7/IC6
HPBS	2	pin8/IC6
Z6-Z15	4	pin4/IC19
Z6	4	pin5/IC19
Z15	4	pin3/IC19

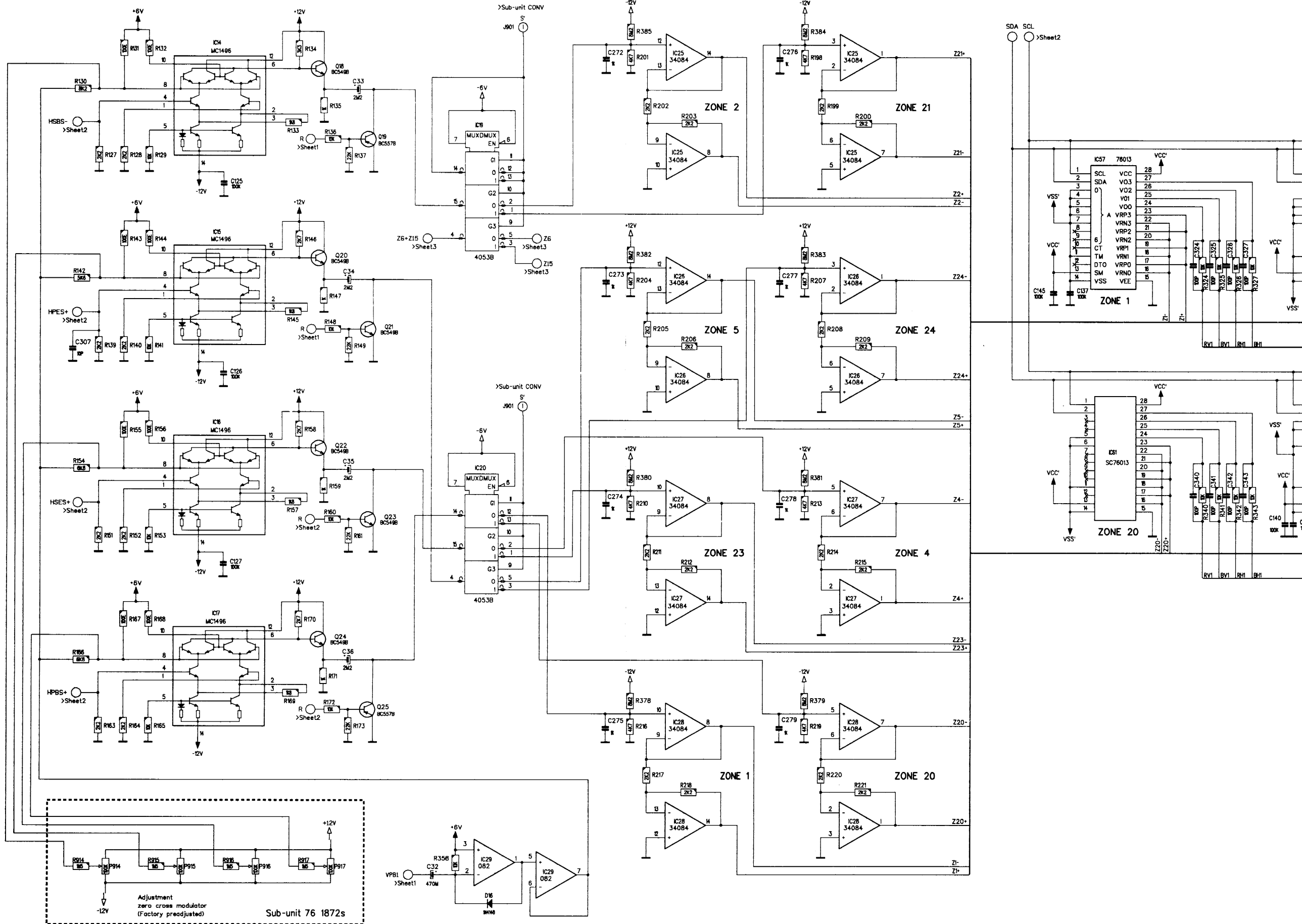
CORRECTION ZONE

1	2	3	4	5
6	7	8	9	10
11	12		13	14
15	16	17	18	19
20	21	22	23	24

1 >Sheet 1 : INPUT & POWER
 2 >Sheet 2 : HOR. & VERT. AXIS
 3 >Sheet 3 : CORNER CONV.
 4 >Sheet 4 : CORNER CONV.
 5 >Sheet 5 : FINAL AMPLIFIERS
 6 >Sheet 6 : FRONT REC. & RS232

Name	CORNER CONVERGENCES	Article nr.	76 2172-2
Date	10-05-1993	Drawn	JVDY
		Checked	GM
BARCO PROJECTION SYSTEMS			

Modifications reserved

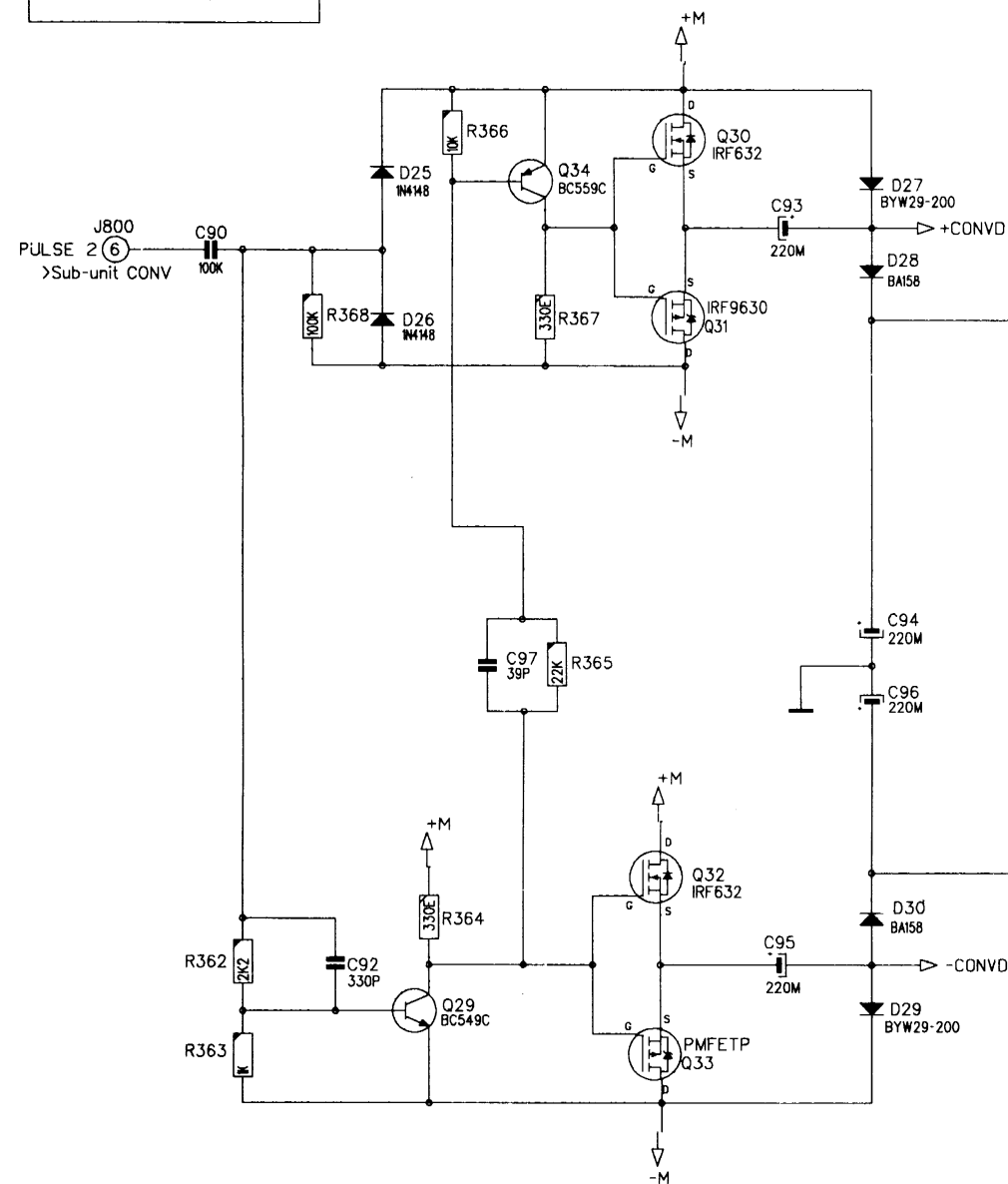
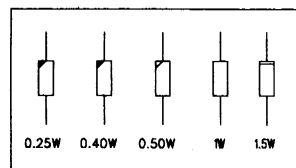




COMPONENTS MARKED WITH * OR Δ HAVE SPECIAL CHARACTERISTICS IMPORTANT TO SAFETY. BEFORE REPLACING ANY OF THESE COMPONENTS, READ CAREFULLY THE SERVICE SAFETY PRECAUTIONS DO NOT DEGRADE THE SAFETY OF THIS SET THROUGH IMPROPER SERVICING.

1	>Sheet 1	: INPUT & POWER
2	>Sheet 2	: HOR. & VERT. AXIS
3	>Sheet 3	: CORNER CONV.
4	>Sheet 4	: CORNER CONV.
5	>Sheet 5	: FINAL AMPLIFIERS
6	>Sheet 6	: FRONT REC. & RS232

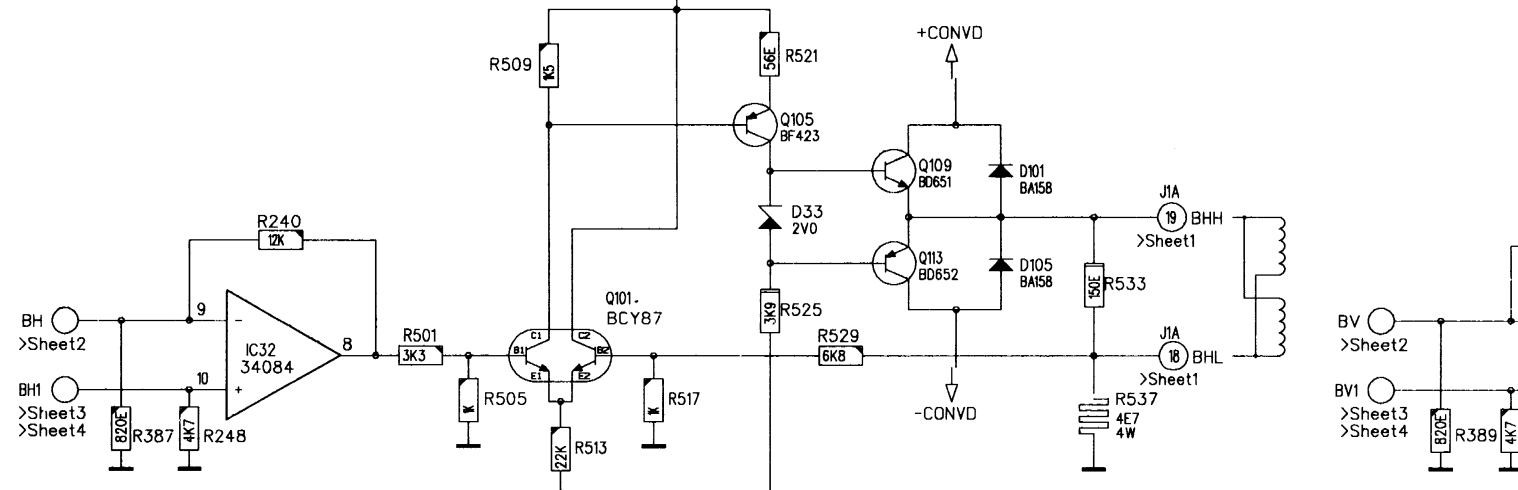
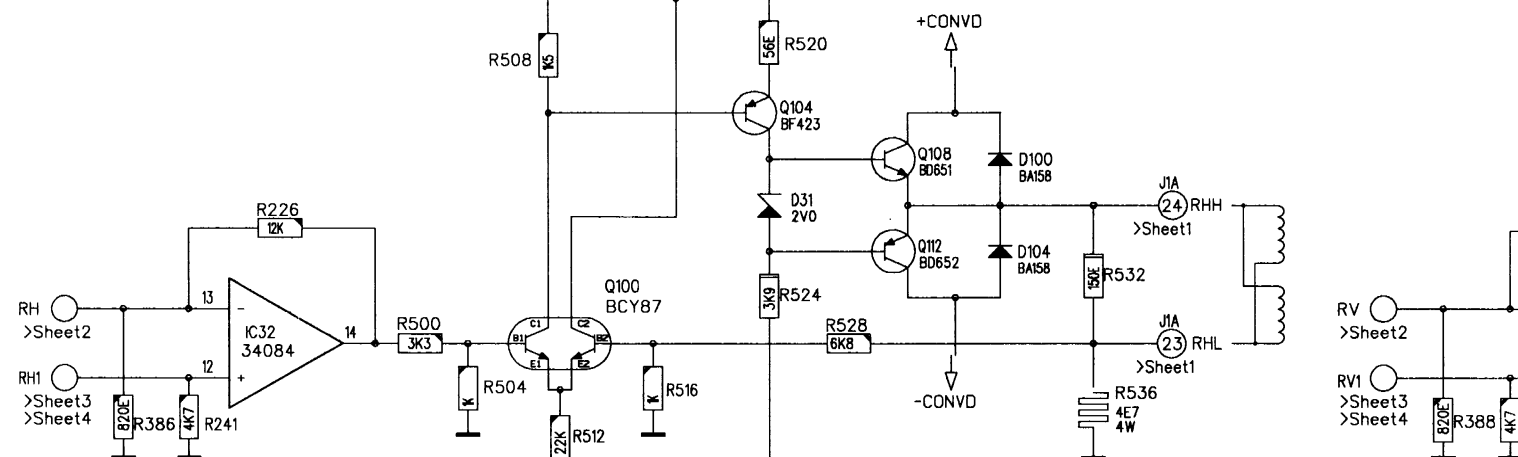
Modifications reserved



INTERCONNECTIONS

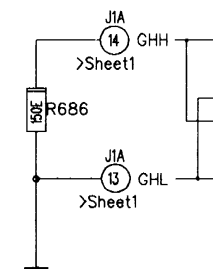
		>Sheet
+M	←	1 SR2
-M	←	1 SR3
RH	←	2 R262,266,270,274,278,282,286,290
RV	←	2 R260,264,268,272,276,280,284,288
BH	←	2 R263,267,271,275,279,283,287,291
BV	←	2 R261,265,269,273,277,281,285,289
RH1	←	3 R294,298,302,306,310,314,318,322
RV1	←	3 R326,330,334,338,342,346,350,354
BH1	←	3 R292,296,300,304,308,312,316,320
BV1	←	3 R324,328,332,336,340,344,348,352
	←	3 R295,299,303,307,311,315,319,323
	←	3 R327,331,335,339,343,347,351,355
	←	3 R293,297,301,305,309,313,317,321
	←	3 R325,329,333,337,341,345,349,353

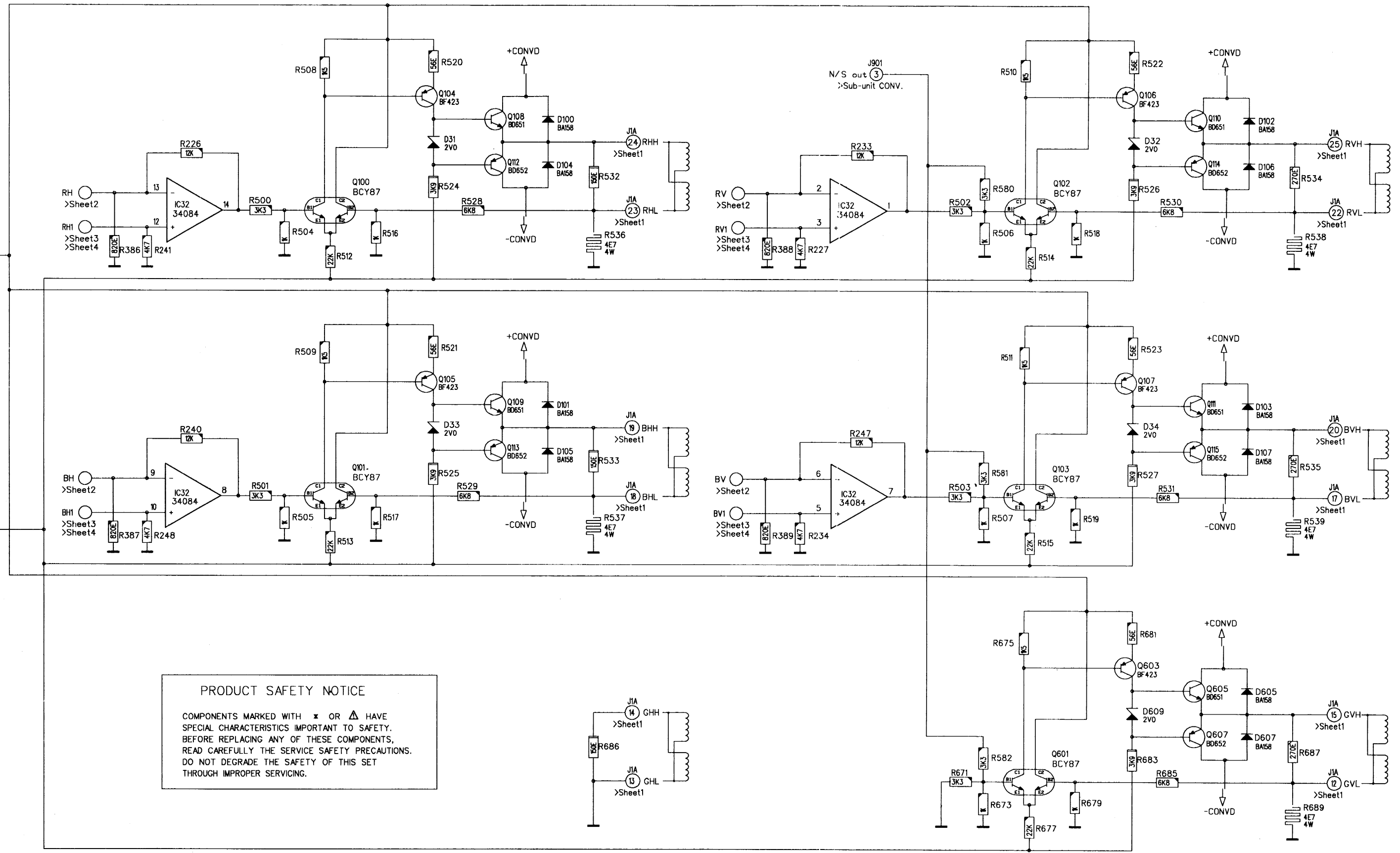
1	>Sheet 1	: INPUT & POWER
2	>Sheet 2	: HOR. & VERT. AXIS
3	>Sheet 3	: CORNER CONV.
4	>Sheet 4	: CORNER CONV.
5	>Sheet 5	: FINAL AMPLIFIERS
6	>Sheet 6	: FRONT REC. & RS232

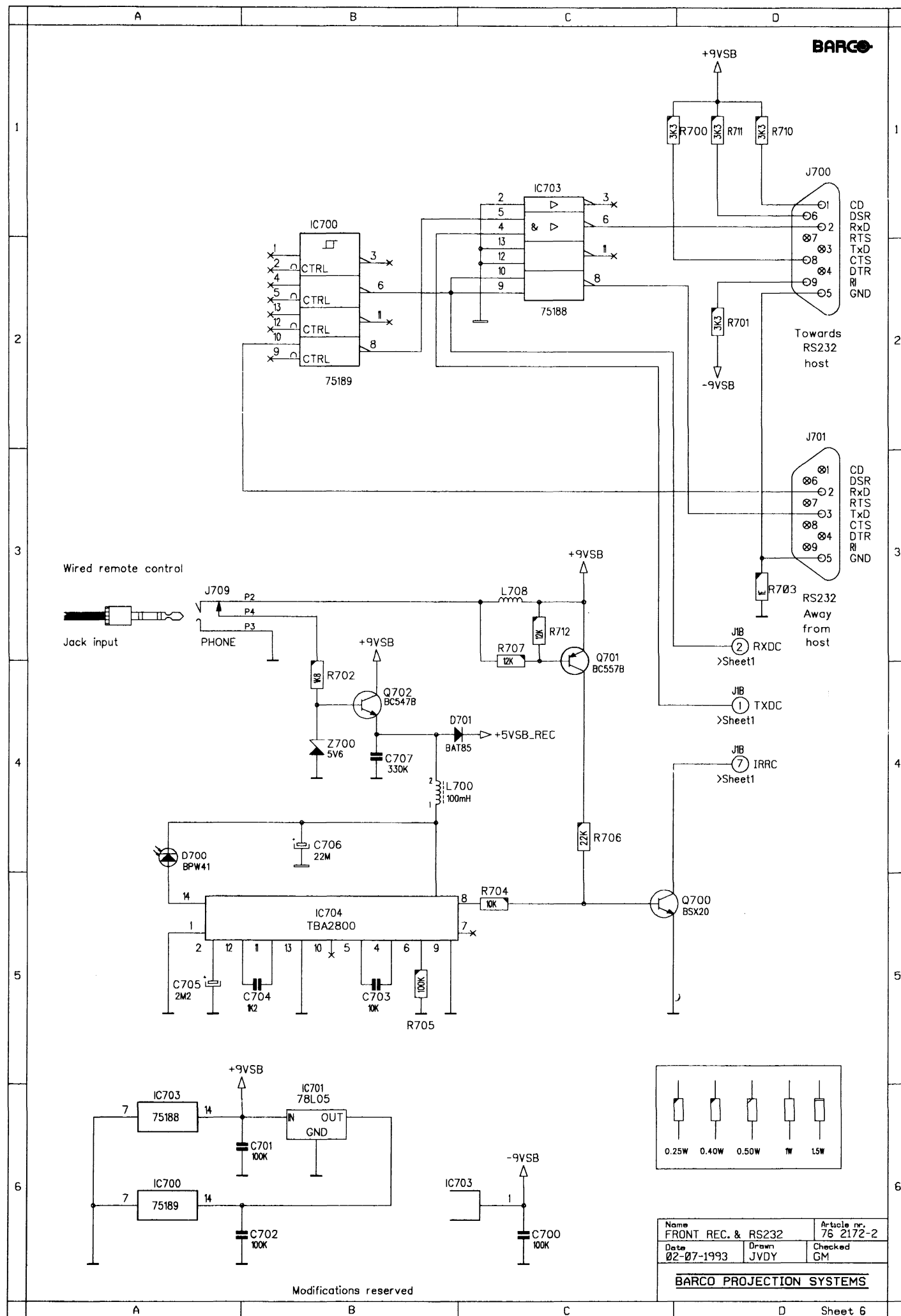


PRODUCT SAFETY NOTICE

COMPONENTS MARKED WITH * OR Δ HAVE SPECIAL CHARACTERISTICS IMPORTANT TO SAFETY. BEFORE REPLACING ANY OF THESE COMPONENTS, READ CAREFULLY THE SERVICE SAFETY PRECAUTIONS. DO NOT DEGRADE THE SAFETY OF THIS SET THROUGH IMPROPER SERVICING.

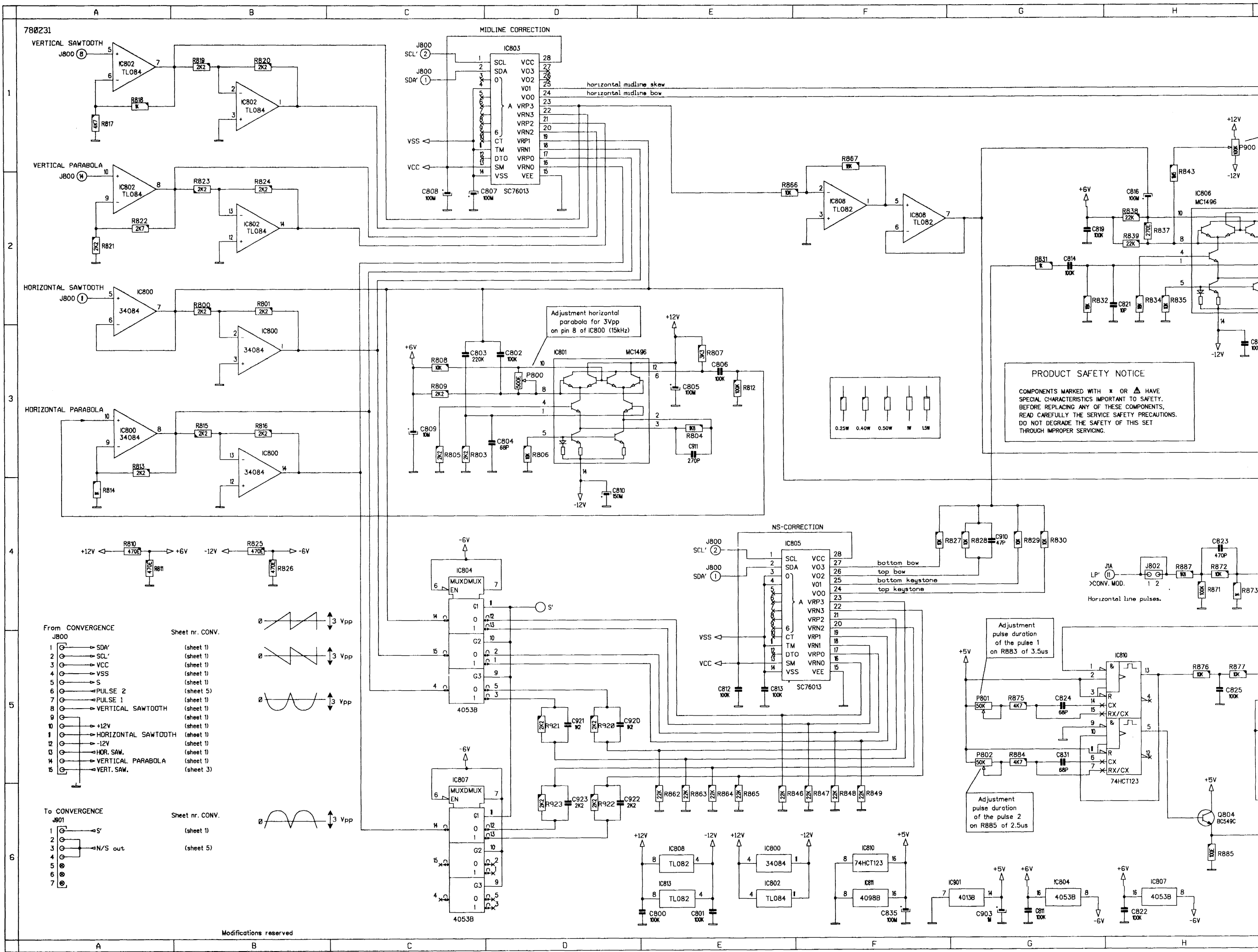






COMP.	LOC.	SHEET	COMP.	LOC.	SHEET
C1	C 4	sheet 1	C278	E 4	sheet 4
C2	G 1	sheet 1	C279	E 5	sheet 4
C3	H 1	sheet 1	C300	A 2	sheet 1
C4	G 1	sheet 1	C303	G 1	sheet 1
C5	H 1	sheet 1	C304	D 2	sheet 2
C6	G 2	sheet 1	C305	D 4	sheet 2
C7	G 3	sheet 1	C306	C 5	sheet 2
C8	G 3	sheet 1	C307	A 3	sheet 4
C9	G 3	sheet 1	C324	H 2	sheet 4
C10	I 3	sheet 1	C325	H 2	sheet 4
C11	J 3	sheet 1	C326	H 2	sheet 4
C12	G 6	sheet 1	C327	H 2	sheet 4
C13	H 6	sheet 1	C340	H 4	sheet 4
C14	G 4	sheet 1	C341	H 4	sheet 4
C15	G 5	sheet 1	C342	H 4	sheet 4
C16	G 4	sheet 1	C343	H 4	sheet 4
C17	G 5	sheet 1	C700	C 6	sheet 6
C18	I 4	sheet 1	C701	B 6	sheet 6
C19	J 5	sheet 1	C702	B 6	sheet 6
C20	K 4	sheet 1	C703	B 5	sheet 6
C21	A 1	sheet 3	C704	B 5	sheet 6
C22	C 1	sheet 3	C705	A 5	sheet 6
C23	A 2	sheet 3	C706	B 4	sheet 6
C24	C 2	sheet 3	C707	B 4	sheet 6
C25	A 3	sheet 3			
C26	C 3	sheet 3	D1	D 5	sheet 2
C27	A 5	sheet 3	D2	H 1	sheet 1
C28	C 5	sheet 3	D4	H 2	sheet 1
C29	B 5	sheet 1	D6	K 1	sheet 1
C30	B 6	sheet 1	D8	K 3	sheet 1
C31	B 6	sheet 1	D9	J 4	sheet 1
C32	C 6	sheet 4	D10	K 4	sheet 1
C33	C 1	sheet 4	D13	D 1	sheet 2
C34	C 2	sheet 4	D14	D 3	sheet 2
C35	C 4	sheet 4	D15	D 4	sheet 2
C36	C 5	sheet 4	D16	C 6	sheet 4
C37	D 5	sheet 1	D25	B 2	sheet 5
C38	D 5	sheet 1	D26	B 2	sheet 5
C39	E 5	sheet 1	D27	C 2	sheet 5
C40	F 5	sheet 1	D28	C 2	sheet 5
C41	D 4	sheet 1	D29	C 4	sheet 5
C42	E 4	sheet 1	D30	C 4	sheet 5
C43	E 4	sheet 1	D31	G 2	sheet 5
C44	F 4	sheet 1	D32	K 2	sheet 5
C45	F 5	sheet 1	D33	G 3	sheet 5
C46	F 4	sheet 1	D34	K 3	sheet 5
C47	E 5	sheet 1	D60	E 2	sheet 1
C50	H 1	sheet 1	D61	F 2	sheet 1
C51	I 1	sheet 1	D100	G 1	sheet 5
C55	C 4	sheet 2	D101	G 3	sheet 5
C57	D 5	sheet 1	D102	K 1	sheet 5
C58	D 5	sheet 1	D103	K 3	sheet 5
C59	D 5	sheet 1	D104	G 2	sheet 5
C60	D 6	sheet 1	D105	G 3	sheet 5
C61	D 6	sheet 1	D106	K 2	sheet 5
C62	D 6	sheet 1	D107	K 3	sheet 5
C67	C 6	sheet 1	D605	K 5	sheet 5
C68	B 6	sheet 1	D607	K 5	sheet 5
C69	C 6	sheet 1	D609	K 5	sheet 5
C70	F 5	sheet 1	D700	A 4	sheet 6
C71	F 4	sheet 1	D701	B 4	sheet 6
C72	J 1	sheet 1			
C73	C 5	sheet 1	K1	H 6	sheet 1
C82	B 3	sheet 1	K1	C 4	sheet 1
C83	B 3	sheet 1	K1	J 3	sheet 1
C90	A 2	sheet 5	K1	C 4	sheet 1
C92	B 4	sheet 5	K1	J 4	sheet 1
C93	C 2	sheet 5	K1	I 1	sheet 1
C94	C 3	sheet 5	K2	I 6	sheet 1
C95	C 4	sheet 5	K2	C 4	sheet 1
C96	C 3	sheet 5	K2	C 4	sheet 1
C97	B 3	sheet 5	K2	J 1	sheet 1
C120	B 2	sheet 3	K3	H 2	sheet 1
C121	B 3	sheet 3	K4	H 4	sheet 1
C122	B 4	sheet 3	K5	C 5	sheet 1
C123	B 5	sheet 3	K5	C 5	sheet 1
C124	D 2	sheet 3	K5	E 2	sheet 2
C125	B 2	sheet 4	K5	E 2	sheet 2
C126	B 3	sheet 4	K5	E 1	sheet 2
C127	B 4	sheet 4	K5	E 3	sheet 2
C128	E 2	sheet 2	K6	C 5	sheet 1
C129	F 2	sheet 2	K6	C 5	sheet 1
C130	I 2	sheet 2	K6	E 6	sheet 2
C131	I 2	sheet 2	K6	E 5	sheet 2
C132	G 4	sheet 2	K6	E 4	sheet 2
C133	G 4	sheet 2	K6	E 4	sheet 2
C135	J 4	sheet 2	K7	C 3	sheet 1
C136	K 4	sheet 2	K7	C 3	sheet 1
C137	G 3	sheet 4	K7	A 3	sheet 2
C138	I 3	sheet 4	K8	C 6	sheet 1
C139	J 3	sheet 4	K8	C 6	sheet 1
C140	H 4	sheet 4	K8	B 5	sheet 2
C141	H 4	sheet 4	K8	B 4	sheet 2
C142	K 4	sheet 4	K8	B 5	sheet 2
C143	K 4	sheet 4	K8	B 3	sheet 2
C145	G 3	sheet 4	K9	C 6	sheet 1
C150	D 3	sheet 1	K9	C 6	sheet 1
C151	E 3	sheet 1	K9	B 2	sheet 2
C262	G 2	sheet 2	K9	B 1	sheet 2
C263	G 2	sheet 2	K9	B 2	sheet 2
C264	D 1	sheet 3	K9	B 3	sheet 2
C265	D 2	sheet 3	K10	B 1	sheet 3
C266	D 4	sheet 3	K11	B 2	sheet 3
C267	D 5	sheet 3	K12	B 3	sheet 3
C268	E 1	sheet 3	K13	B 4	sheet 3
C269	E 2	sheet 3	K14	B 1	sheet 4
C270	E 4	sheet 3	K15	B 2	sheet 4
C271	E 5	sheet 3	K16	B 3	sheet 4
C272	D 1	sheet 4	K17	B 4	sheet 4
C273	D 2	sheet 4	K18	C 3	sheet 1
C274	D 4	sheet 4	K18	C 3	sheet 1
C275	D 5	sheet 4	K18	C 2	sheet 3
C276	E 1	sheet 4	K19	C 2	sheet 4
C277	E 2	sheet 4	K20	C 3	sheet 1

COMP.	LOC.	SHEET	COMP.	LOC.	SHEET	COMP.	LOC.	SHEET	COMP.	LOC.	SHEET	COMP.	LOC.	SHEET	COMP.	LOC.	SHEET	COMP.	LOC.	SHEET			
C1	C 4	sheet 1	C278	E 4	sheet 4	IC20	C 3	sheet 1	P1	H 3	sheet 1	R50	D 2	sheet 2	R174	D 1	sheet 3	R308	G 4	sheet 3	R509	F 3	sheet 5
C2	G 1	sheet 1	C279	E 5	sheet 4	IC20	C 4	sheet 4	P2	H 4	sheet 1	R51	D 3	sheet 2	R175	E 1	sheet 3	R309	H 4	sheet 3	R510	J 1	sheet 5
C3	H 1	sheet 1	C300	A 2	sheet 1	IC21	B 5	sheet 1	P910	A 6	sheet 3	R52	E 3	sheet 2	R176	E 1	sheet 3	R310	H 4	sheet 3	R511	J 3	sheet 5
C4	G 1	sheet 1	C303	G 1	sheet 1	IC21	B 5	sheet 1	P911	B 6	sheet 3	R53	H 6	sheet 1	R177	E 1	sheet 3	R311	H 4	sheet 3	R512	F 2	sheet 5
C5	H 1	sheet 1	C304	D 2	sheet 2	IC21	E 1	sheet 3	P912	B 6	sheet 3	R54	D 3	sheet 2	R178	E 1	sheet 3	R312	I 4	sheet 3	R513	F 4	sheet 5
C6	G 2	sheet 1	C305	D 4	sheet 2	IC21	F 1	sheet 3	P913	C 6	sheet 3	R55	D 4	sheet 2	R179	F 1	sheet 3	R313	I 4	sheet 3	R514	J 2	sheet 5
C7	G 3	sheet 1	C306	C 5	sheet 2	IC21	F 2	sheet 3	P914	A 6	sheet 4	R56	D 4	sheet 2	R180	D 2	sheet 3	R314	I 4	sheet 3	R515	J 4	sheet 5
C8	G 3	sheet 1	C307	A 3	sheet 4	IC21	E 2	sheet 3	P915	B 6	sheet 4	R57	E 4	sheet 2	R181	E 3	sheet 3	R315	I 4	sheet 3	R516	F 2	sheet 5
C9	G 3	sheet 1	C324	H 2	sheet 4	IC22	B 5	sheet 1	P916	B 6	sheet 4	R58	I 6	sheet 1	R182	E 3	sheet 3	R316	J 4	sheet 3	R517	F 4	sheet 5
C10	I 3	sheet 1	C325	H 2	sheet 4	IC22	B 5	sheet 1	P917	C 6	sheet 4	R59	C 5	sheet 2	R183	E 2	sheet 3	R317	J 4	sheet 3	R518	J 2	sheet 5
C11	J 3	sheet 1	C326	H 2	sheet 4	IC22	F 2	sheet 3				R60	C 5	sheet 2	R184	E 3	sheet 3	R318	J 4	sheet 3	R519	J 4	sheet 5
C12	G 6	sheet 1	C327	H 2	sheet 4	IC22	E 2	sheet 3				R61	D 5	sheet 2	R185	F 3	sheet 3	R319	K 4	sheet 3	R520	F 1	sheet 5
C13	H 6	sheet 1	C340	H 4	sheet 4	IC22	E 3	sheet 3	Q1	H 1	sheet 1	R62	E 5	sheet 2	R186	D 4	sheet 3	R320	L 4	sheet 3	R521	F 3	sheet 5
C14	G 4	sheet 1	C341	H 4	sheet 4	IC22	F 3	sheet 3	Q2	H 1	sheet 1	R63	D 5	sheet 2	R187	E 4	sheet 3	R321	L 4	sheet 3	R522	K 1	sheet 5
C15	G 5	sheet 1	C342	H 4	sheet 4	IC23	B 6	sheet 1	Q3	K 1	sheet 1	R64	B 1	sheet 2	R188	E 4	sheet 3	R322	L 4	sheet 3	R523	K 3	sheet 5
C16	G 4	sheet 1	C343	H 4	sheet 4	IC23	B 6	sheet 1	Q4	K 3	sheet 1	R65	B 1	sheet 2	R189	E 4	sheet 3	R323	L 4	sheet 3	R524	F 2	sheet 5
C17	G 5	sheet 1	C700	C 6	sheet 6	IC23	F 4	sheet 3	Q5	K 4	sheet 1	R66	B 1	sheet 2	R190	E 4	sheet 3	R324	H 3	sheet 4	R525	F 4	sheet 5
C18	I 4	sheet 1	C701	B 6	sheet 6	IC23	E 5	sheet 3	Q6	D 1	sheet 2	R67	B 2	sheet 2	R191	F 4	sheet 3	R325	H 3	sheet 4	R526	K 2	sheet 5
C19	J 5	sheet 1	C702	B 6	sheet 6	IC23	F 5	sheet 3	Q7	D 2	sheet 2	R68	B 3	sheet 2	R192	D 5	sheet 3	R326	H 3	sheet 4	R527	K 4	sheet 5
C20	K 4	sheet 1	C703	B 5	sheet 6	IC23	E 4	sheet 3	Q8	D 4	sheet 2	R69	B 3	sheet 2	R193	E 6	sheet 3	R327	H 3	sheet 4	R528	G 2	sheet 5
C21	A 1	sheet 3	C704	B 5	sheet 6	IC24	B 6	sheet 1	Q9	D 5	sheet 2	R70	B 4	sheet 2	R194	E 6	sheet 3	R328	I 2	sheet 4	R529	G 4	sheet 5
C22	C 1	sheet 3	C705	A 5	sheet 6	IC24	B 6	sheet 1	Q10	C 1	sheet 3	R71	B 4	sheet 2	R195	E 5	sheet 3	R329	I 2	sheet 4	R530	K 2	sheet 5
C23	A 2	sheet 3	C706	B 4	sheet 6	IC24	F 6	sheet 3	Q12	C 2	sheet 3	R72	B 4	sheet 2	R196	E 6	sheet 3	R330	I 2	sheet 4	R531	K 4	sheet 5
C24	C 2	sheet 3	C707	B 4	sheet 6	IC24	E 5	sheet 3	Q13	C 3	sheet 3	R73	B 5	sheet 2	R197	F 6	sheet 3	R331	I 2	sheet 4	R532	G 2	sheet 5
C25	A 3	sheet 3				IC24	E 6	sheet 3	Q14	C 3	sheet 3	R74	B 5	sheet 2	R198	E 1	sheet 4	R332	J 2	sheet 4	R533	G 4	sheet 5
C26	C 3	sheet 3				IC24	F 5	sheet 3	Q15	C 4	sheet 3	R75	B 5	sheet 2	R199	E 1	sheet 4	R333	J 2	sheet 4	R534	L 2	sheet 5
C27	A 5	sheet 3	D1	D 5	sheet 2	IC25	B 4	sheet 1	Q16	C 5	sheet 3	R79	A 2	sheet 3	R200	F 1	sheet 4	R334	J 2	sheet 4	R535	L 4	sheet 5
C28	C 5	sheet 3	D2	H 1	sheet 1	IC25	B 4	sheet 1	Q17	C 5	sheet 3	R80	A 2	sheet 3	R201	D 1	sheet 4	R335	K 2	sheet 4	R536	G 2	sheet 5
C29	B 5	sheet 1	D4	H 2	sheet 1	IC25	F 2	sheet 4	Q18	C 1	sheet 4	R81	B 2	sheet 3	R202	D 1	sheet 4	R336	L 2	sheet 4	R537	G 4	sheet 5
C30	B 6	sheet 1	D6	K 1	sheet 1	IC25	E 2	sheet 4	Q19	C 2	sheet 4	R82	A 1	sheet 3	R203	E 1	sheet 4	R337	L 2	sheet 4	R538	L 2	sheet 5
C31	B 6	sheet 1	D8	K 3	sheet 1	IC25	E 1	sheet 4	Q20	C 2	sheet 4	R83	A 1	sheet 3	R204	D 2	sheet 4	R338	L 2	sheet 4	R539	L 4	sheet 5
C32	C 6	sheet 4	D9	J 4	sheet 1	IC25	F 1	sheet 4	Q21	C 3	sheet 4	R84	B 1	sheet 3	R205	D 3	sheet 4	R339	L 2	sheet 4	R560	D 3	sheet 1
C33	C 1	sheet 4	D10	K 4	sheet 1	IC26	B 4	sheet 1	Q22	C 3	sheet 4	R85	B 1	sheet 3	R206	F 3	sheet 4	R340	H 4	sheet 4	R561	E 3	sheet 1
C34	C 2	sheet 4	D13	D 1	sheet 2	IC26	B 4	sheet 1	Q23	C 4	sheet 4	R86	C 1	sheet 3	R207	E 2	sheet 4	R341	H 4	sheet 4	R562	E 3	sheet 1
C35	C 4	sheet 4	D14	D 3	sheet 2	IC26	F 3	sheet 4	Q24	C 5	sheet 4	R87	C 1	sheet 3	R208	E 3	sheet 4	R342	H 4	sheet 4	R563	E 2	sheet 1
C36	C 5	sheet 4	D15	D 4	sheet 2	IC26	F 3	sheet 4	Q25	C 5	sheet 4	R88	C 1	sheet 3	R209	F 3	sheet 4	R343	H 4	sheet 4	R564	F 2	sheet 1
C37	D 5	sheet 1	D16	C 6	sheet 4	IC26	F 2	sheet 4	Q29	B 4	sheet 5	R89	C 2	sheet 3	R210	D 4	sheet 4	R344	I 4	sheet 4	R565	E 2	sheet 1
C38	D 5	sheet 1	D25	B 2	sheet 5	IC26	E 2	sheet 4	Q30	C 2	sheet 5	R91	A 3	sheet 3	R211	D 4	sheet 4	R345	I 4	sheet 4	R566	F 2	sheet 1
C39	E 5	sheet 1	D26	B 2	sheet 5	IC26	E 2	sheet 4	Q31	C 2	sheet 5	R92	A 3	sheet 3	R212	E 4	sheet 4	R346	I 4	sheet 4	R580	J 2	sheet 5
C40	F 5	sheet 1	D27	C 2	sheet 5	IC27	B 4	sheet 1	Q32	C 4	sheet 5	R93	B 3	sheet 3	R213	E 4	sheet 4	R347	I 4	sheet 4	R581	J 4	sheet 5
C41	D 4	sheet 1	D28	C 2	sheet 5	IC27	F 4	sheet 4	Q33	C 5	sheet 5	R94	A 2	sheet 3	R214	E 4	sheet 4	R348	J 4	sheet 4	R582	J 5	sheet 5
C42	E 4	sheet 1	D29	C 4	sheet 5	IC27	F 4	sheet 4	Q34	B 2	sheet 5	R95	A 2	sheet 3	R215	F 4	sheet 4	R349	J 4	sheet 4	R671	J 5	sheet 5
C43	E 4	sheet 1	D30	C 4	sheet 5	IC27	F 4	sheet 4	Q50	E 3	sheet 1	R96	B 2	sheet 3	R216	D 5	sheet 4	R350	J 4	sheet 4	R673	J 6	sheet 5
C44	F 4	sheet 1	D31	G 2	sheet 5	IC27	E 4	sheet 4	Q51	F 2	sheet 1	R97	B 3	sheet 3	R217	D 5	sheet 4	R351	K 4	sheet 4	R675	J 5	sheet 5
C45	F 5	sheet 1	D32	K 2	sheet 5	IC28	B 5	sheet 1	Q100	F 2	sheet 5	R98	C 2	sheet 3	R218	E 5	sheet 4	R352	L 4	sheet 4	R677	J 6	sheet 5
C46	F 4	sheet 1	D33	G 3	sheet 5	IC28	B 5	sheet 1	Q101	F 4	sheet 5	R99	C 2	sheet 3	R219	E 5	sheet 4	R353	L 4	sheet 4	R679	J 6	sheet 5
C47	E 5	sheet 1	D34	K 3	sheet 5	IC28	F 5	sheet 4	Q102	J 2	sheet 5	R100	C 3	sheet 3	R220	E 5	sheet 4	R354	L 4	sheet 4	R681	K 5	sheet 5
C50	H 1	sheet 1	D60	E 2	sheet 1	IC28	F 5	sheet 4	Q103	J 4	sheet 5	R101	C 3	sheet 3	R221	F 5	sheet 4	R355	L 4	sheet 4	R685	K 5	sheet 5
C51	I 1	sheet 1	D61	F 2	sheet 1	IC28	E 5	sheet 4	Q104	F 1	sheet 5	R103	A 4	sheet 3	R222	F 4	sheet 1	R356	C 1	sheet 1	R686	G 5	sheet 5
C55	C 4	sheet 2	D100	G 1	sheet 5	IC28	E 6	sheet 4	Q105	F 3	sheet 5	R104	A 4	sheet 3	R223	F 5	sheet 1	R357	C 2	sheet 1	R687	L 5	sheet 5
C57	D 5	sheet 1	D101	G 3	sheet 5	IC29	B 5	sheet 1	Q106	K 1	sheet 5	R105	B 4	sheet 3	R224	F 4	sheet 1	R358	C 6	sheet 4	R689	L 6	sheet 5
C58	D 5	sheet 1	D102	K 1	sheet 5	IC29	B 5	sheet 1	Q107	K 3	sheet 5	R106	A 4	sheet 3	R225	F 4	sheet 1	R362	A 4	sheet 5	R699	A 2	sheet 1
C59	D 5	sheet 1	D103	K 3	sheet 5	IC29	C 6	sheet 4	Q108	G 1	sheet 5	R107	A 3	sheet 3	R226	E 2	sheet 5	R363	A 5	sheet 5	R700	D 1	sheet 6
C60	D 6	sheet 1	D104	G 2	sheet 5	IC29	D 6	sheet 4	Q109	G 3	sheet 5	R108	B 3	sheet 3	R227	I 2	sheet 5	R364	B 4	sheet 5	R701	D 2	sheet 6
C61	D 6	sheet 1	D105	C 3	sheet 5	IC30	E 4	sheet 1	Q110	K 1	sheet 5	R109	B 4	sheet 3	R233	I 2	sheet 5	R365	B 3	sheet 5	R702	B 4	sheet 6
C62	D 6	sheet 1	D106	K 2	sheet 5	IC31	E 3	sheet 1	Q11	K 3	sheet 5	R110	C 3	sheet 3	R234	I 4	sheet 5	R366	B 2	sheet 5	R703	D 3	sheet 6
C67	C 6	sheet 1	D107	K 3	sheet 5	IC32	B 3	sheet 1	Q112	G 2	sheet 5	R11	C 4	sheet 3	R240	E 3	sheet 5	R367	B 2	sheet 5	R704	C 5	sheet 6
C68	B 6	sheet 1	D605	K 5	sheet 5	IC32	B 3	sheet 1	Q113	G 3	sheet 5	R112	C 4	sheet 3	R241	E 2	sheet 5	R368	B 2	sheet 5	R705	B 5	sheet 6
C69	C 6	sheet 1	D607	K 5	sheet 5	IC32	I 2	sheet 5	Q114	K 2	sheet 5	R113	C 4	sheet 3	R247	I 3	sheet 5	R370	D 5	sheet 3	R706	C 4	sheet 6
C70	F 5	sheet 1	D609	K 5	sheet 5	IC32	E 2	sheet 5	Q115	K 3	sheet 5	R115	A 5	sheet 3	R248	E 4	sheet 5	R371	E 5	sheet 3	R707	C 3	sheet 6
C71	F 4	sheet 1	D700	A 4	sheet 6	IC32	E 4	sheet 5	Q601	J 5	sheet 5	R116	A 5	sheet 3	R254	D 5	sheet 1	R372	D 4	sheet 3	R710	D 1	sheet 6
C72	J 1	sheet 1	D701	B 4	sheet 6	IC32	I 4	sheet 5	Q603	K 5	sheet 5	R117	B 5	sheet 3	R255	D 5	sheet 1	R373	E 4	sheet 3	R711	D 1	sheet 6
C73	C 5	sheet 1				IC37	D 5	sheet 1	Q605	K 5	sheet 5	R118	A 5	sheet 3	R256	D 6	sheet 1	R374	D 2	sheet 3	R712	C 3	sheet 6
C82	B 3	sheet 1	IC1	H 6	sheet 1	IC38	D 6	sheet 1	Q607	K 5	sheet 5	R119	A 4	sheet 3	R257	D 6	sheet 1	R375	E 2	sheet 3	R910	A 6	sheet 3
C83	B 3	sheet 1	IC1	C 4	sheet 1	IC41	F 1	sheet 2	Q700	D 5	sheet 6	R120	B 4	sheet 3	R258	J 1	sheet 1	R376	D 1	sheet 3	R911	B 6	sheet 3
C90	A 2	sheet 5	IC1	J 3	sheet 1	IC42	H 2	sheet 2	Q701	C 3	sheet 6	R121	B 5	sheet 3	R259	J 2	sheet 1						



780231

VERTICAL SAWTOOTH

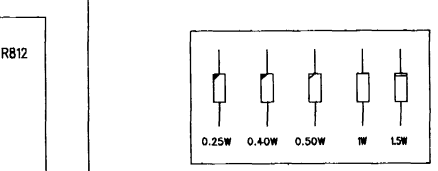
VERTICAL PARABOLA

HORIZONTAL SAWTOOTH

HORIZONTAL PARABOLA

MIDLINE CORRECTION

Adjustment horizontal parabola for 3Vpp on pin 8 of IC800 (15kHz)



PRODUCT SAFETY NOTICE

COMPONENTS MARKED WITH * OR Δ HAVE SPECIAL CHARACTERISTICS IMPORTANT TO SAFETY. BEFORE REPLACING ANY OF THESE COMPONENTS, READ CAREFULLY THE SERVICE SAFETY PRECAUTIONS. DO NOT DEGRADE THE SAFETY OF THIS SET THROUGH IMPROPER SERVICING.

From CONVERGENCE

- 1 SDA'
- 2 SCL'
- 3 VCC
- 4 VSS
- 5 S
- 6 PULSE 2
- 7 PULSE 1
- 8 VERTICAL SAWTOOTH
- 9 +12V
- 10 HORIZONTAL SAWTOOTH
- 11 -12V
- 12 HOR. SAW.
- 13 VERTICAL PARABOLA
- 14 VERT. SAW.

Sheet nr. CONV.

- (sheet 1)
- (sheet 1)
- (sheet 1)
- (sheet 1)
- (sheet 5)
- (sheet 1)
- (sheet 1)
- (sheet 1)
- (sheet 1)
- (sheet 1)
- (sheet 1)
- (sheet 1)
- (sheet 3)

To CONVERGENCE

- 1 S'
- 2 N/S out
- 3
- 4
- 5
- 6
- 7

Sheet nr. CONV.

- (sheet 1)
- (sheet 5)

Modifications reserved

